

PASSCODE

PRIME  PARK

NEAR DAHISAR CHECK NAKA

THE METROPOLITAN LIFESTYLE DISTRICT

aaradhya  
HIGH  PARK  
BEYOND THE EXPECTED



WHERE

NATURE

IS YOUR NEIGHBOUR &

BLISS

IS A WAY OF LIFE



Stock image





*Man Infraconstruction is a leading construction company in India that has executed construction work for some of the most significant port projects in the country. Man Infra has successfully executed construction of five ports viz., Jawaharlal Nehru Port Trust, Mundra Port, Chennai Port, Vallarpadam Port ,Pipavav Port.*

*The Company has entered into Real Estate Development & is currently developing premium Residential Projects with an approximate saleable area of 5 million sq. ft. in various suburbs of Mumbai.*



**50+**  
YEARS OF  
QUALITY  
EXECUTION &  
TIMELY DELIVERY  
OF PROJECTS

**1000+**  
HAPPY  
FAMILIES

**9** Completed Projects  
**2 million +** SQ.FT. of Residential Development  
**6** Prestigious Awards

# COMPLETED PROJECTS

Delivered ahead of time.



**atmosphere**  
live it  
PHASE - I  
(MULUND WEST)

07 MONTHS  
BEFORE TIME POSSESSION  
JAN 2015 TO FEB 2019



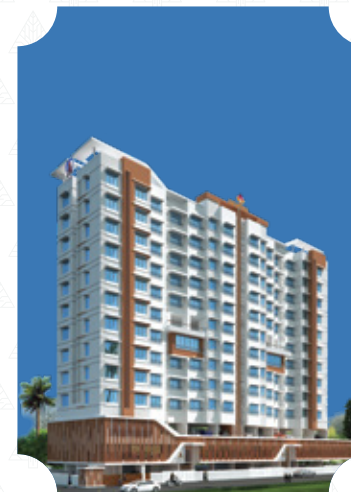
**aaradhya | one**  
(CHEMBUR-WEST)

07 MONTHS  
BEFORE TIME POSSESSION  
NOV 2015 TO MAY 2018



**aaradhya | nine**  
(GHATKOPAR-EAST)

10 MONTHS  
BEFORE TIME POSSESSION  
MARCH 2017 TO DEC 2019



**aaradhya | tower**  
(GHATKOPAR-EAST)

1 MONTH  
BEFORE TIME POSSESSION  
MAY 2013 TO MAY 2015



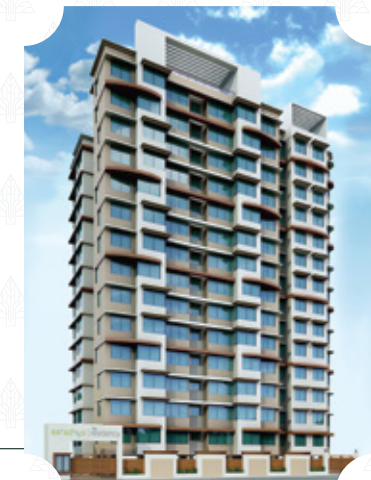
**aaradhya | signature**  
(SION WEST)

09 MONTHS  
BEFORE TIME POSSESSION  
OCT 2015 TO APR 2018



**aaradhya | residency**  
(GHATKOPAR-WEST)

6 MONTHS  
BEFORE TIME POSSESSION  
OCT 2015 TO MAY 2017





## COMPLETED PROJECTS

Delivered ahead of time.



aaradhya | nalanda

(GHATKOPAR-EAST)

09 MONTHS  
BEFORE TIME POSSESSION  
AUG 2015 TO OCT 2016



aaradhya  
HIGH PARK

BEYOND THE EXPECTED  
(NEAR DAHISAR CHECK NAKA)

MahaRera -  
P51700017865 & P51700018244



aaradhya | swastik

(CHEMBUR EAST)

04 MONTHS  
BEFORE TIME POSSESSION  
SEP 2015 TO JULY 2017



ghatkopar  
avenue

INSPIRED BY THE WORLD  
(GHATKOPAR EAST)

MahaRera - P51800000229



aaradhya | saphalya

(GHATKOPAR EAST)

10 MONTHS  
BEFORE TIME POSSESSION  
FEB 2015 TO MAY 2016



atmosphere 2

RESIDENCES

(GMLR, MULUND WEST)

MahaRera - P51800019950





ONGOING PROJECTS



  
insignia

(VILE PARLE WEST)  
MahaRera - P51800028166



ONGOING COMMERCIAL PROJECTS



aaradhya  
**PRIMUS**

(NEAR DAHISAR CHECK NAKA)  
MahaRera - P51700023844



aaradhya  
EASTWIND  
(VIKHOLOI EAST)  
MahaRera - P51800020183



  
aaradhya | SQUARE

(GHATKOPAR-EAST)  
MahaRera - P51800027659



THE  
**GATEWAY**

(GMLR, MULUND-WEST)

MahaRera - P51800024845







**Mira Road Railway Station**



**Mira Road Railway Station**

Bharat Ratna Indira Gandhi Hospital



St. Xavier's High School



Western Express Highway



Upcoming Metro



PASSCODE  
**PRIME PARK**

Thakur Mall  
Singapore International School



**Dahisar Railway Station**



Bhagwati Hospital



Lotus Multispeciality Hospital



Vibgyor International School



Karuna Hospital



Rustomjee Cambridge International School



Western Express Highway

Growel's Mall



Oberoi Mall



Hotel Fountain

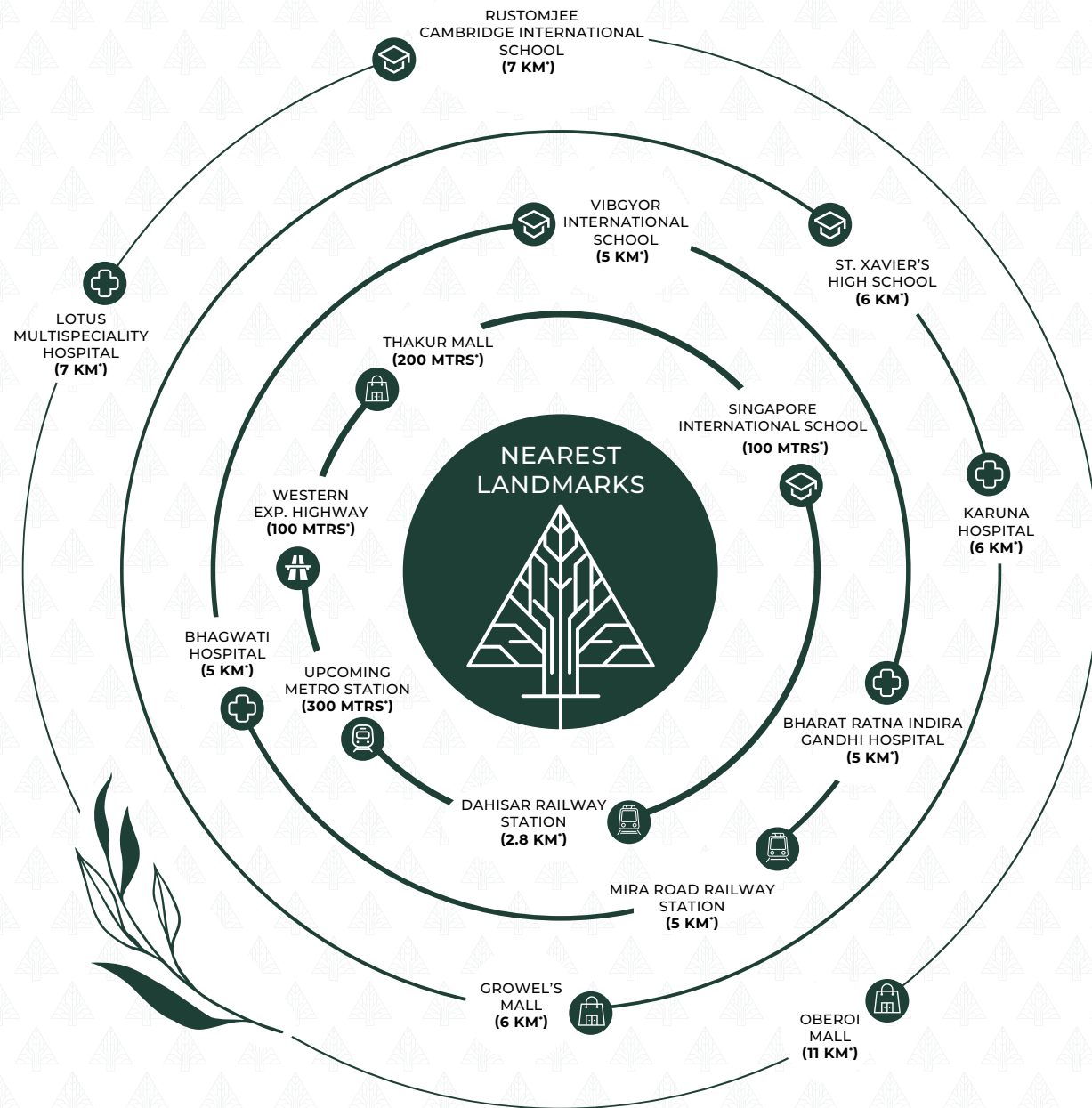
Ghodbunder Road

**Sanjay Gandhi National Park**

\*SOURCE GOOGLE MAP. MAP NOT TO SCALE

# A WELL-CONNECTED LOCALE

BUILT AROUND EVERY PLACE OF CONVENIENCE



NOTE - DRIVE TIME IN NON PEAK HOURS AS PER GOOGLE MAPS.

## CONNECTIVITY

Western Express Highway	→	100 Mtrs*
Upcoming Metro Station	→	300 Mtrs*
Mira Road Railway Station	→	5 Km*
Dahisar Railway Station	→	2.8 Km*

## MALLS

Thakur Mall	→	200 Mtrs*
Growel's Mall	→	6 Km*
Oberoi Mall	→	11 Km*

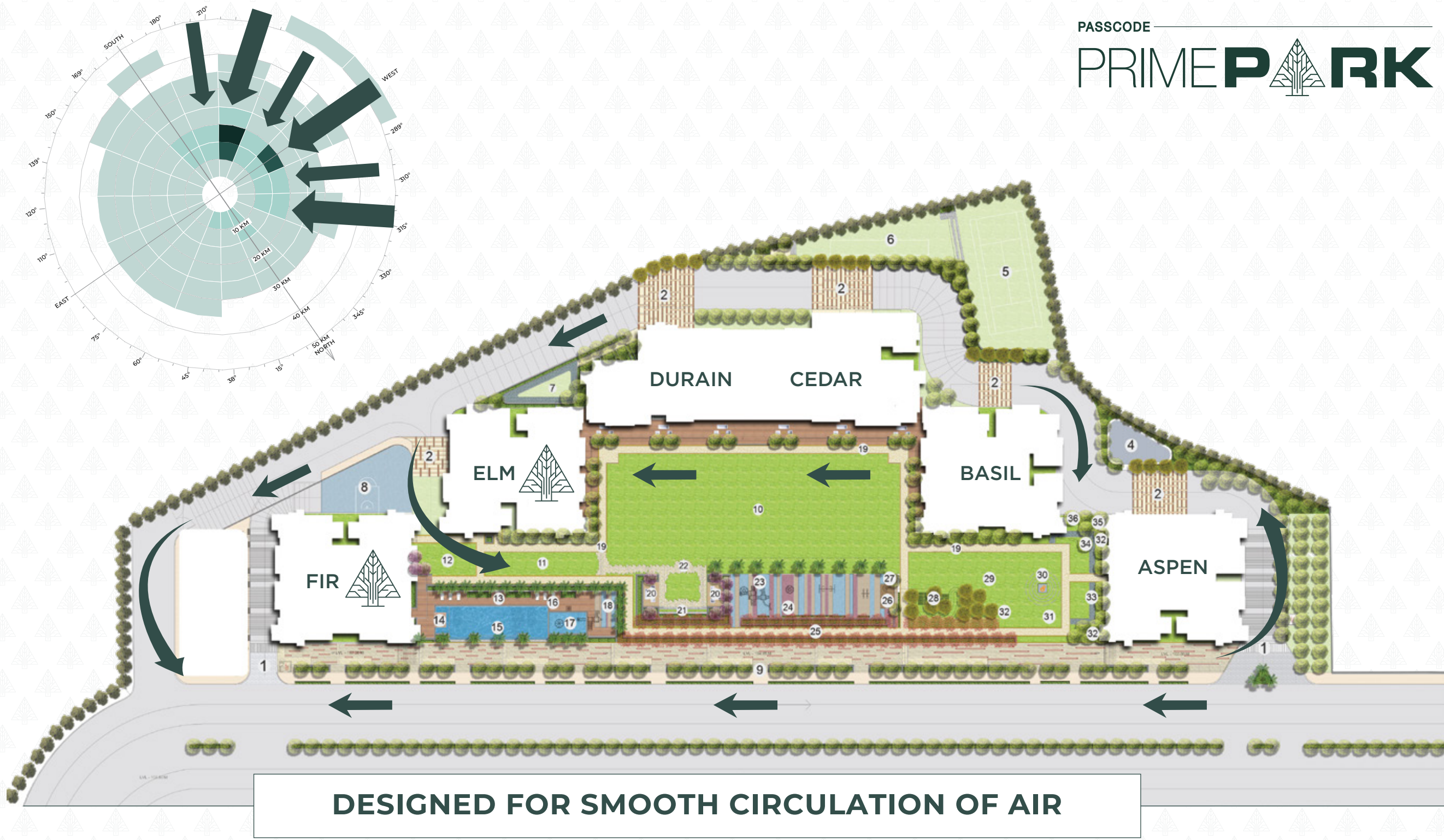
## HOSPITALS

Bhagwati Hospital	→	5 Km*
Bharat Ratna Indira Gandhi Hospital	→	5 Km*
Karuna Hospital	→	6 Km*
Lotus Multispeciality Hospital	→	7 Km*

## SCHOOLS

Singapore International School	→	100 Mtrs*
Vibgyor International School	→	5 Km*
St. Xavier's High School	→	6 Km*
Rustomjee Cambridge International School	→	7 Km*





### WHAT THE GRAPH SAYS?

The design of the buildings are in such a way that it allows wind movements through the un-built and open space



### WHAT DOES THIS MEAN?

Passcode PrimePark will experience healthy wind movements



### POSITIVE CONTRIBUTION TO THE BUILDING DESIGN

- a. Integrated cross ventilation strategies
- b. Limited dependence on artificial ventilation





# *Experience Nature*

IN YOUR NEIGHBORHOOD & THE CITY AROUND THE CORNER





GIVE YOUR LIFESTYLE

# *A High-Rise*







## PANORAMIC VISTAS. SPECTACULAR VIEWS.

EXPERIENCE "ELM" & "FIR" - SPECTACULAR 30 STOREY TOWERS, OFFERING ELEGANT 1 & 2 BED APARTMENTS WITH DEDICATED WORLD CLASS AMENITIES FOR AN EXCEPTIONAL LIFESTYLE. LOCATED NEAR THE WESTERN EXPRESS HIGHWAY, THE RESIDENCES HERE HAVE A PANORAMIC VIEW OF THE SANJAY GANDHI NATIONAL PARK. THE HIGH RISE IS DESIGNED TO INDULGE YOUR SENSES WITH ITS VISTAS AND AMENITIES, AND TO MAKE LIFE EASY WITH SEAMLESS CONNECTIVITY.







PRESENTING TOWERS

*Elm & Fir*

**NATURE IN SIGHT & CITY BY YOUR SIDE**

EVERY RESIDENCE AT PASSCODE PRIMEPARK HAS BEEN DESIGNED TO COMMAND STUNNING NATURAL VIEWS WHEN THE RESIDENTIAL FLOORS BEGIN \*31FT. ABOVE GROUND LEVEL. SO WHILE SOME RESIDENCES ENJOY PANORAMIC VISTAS OF THE LUSH GREEN **SANJAY GANDHI NATIONAL PARK**, OTHERS FRAME SPECTACULAR GARDEN VIEWS.





LIVE IN THE GREEN EMBRACE OF THE CITY'S

# *National Park*

EXPERIENCE A BREATH OF FRESH AIR EACH DAY FROM THE VERY LUNGS OF THE CITY, BY LIVING AMIDST THE VERDANT BACKDROP OF MUMBAI'S **SANJAY GANDHI NATIONAL PARK**. APART FROM ENJOYING THE BEAUTEOUS SIGHTS OF THE NEIGHBORING NATURAL FLORA AND FAUNA, ENJOY A SIGNIFICANTLY HEALTHIER LIFESTYLE WITH YOUR FAMILY - IN TUNE WITH NATURE.



ELEVATE YOUR

# *Living Experience*



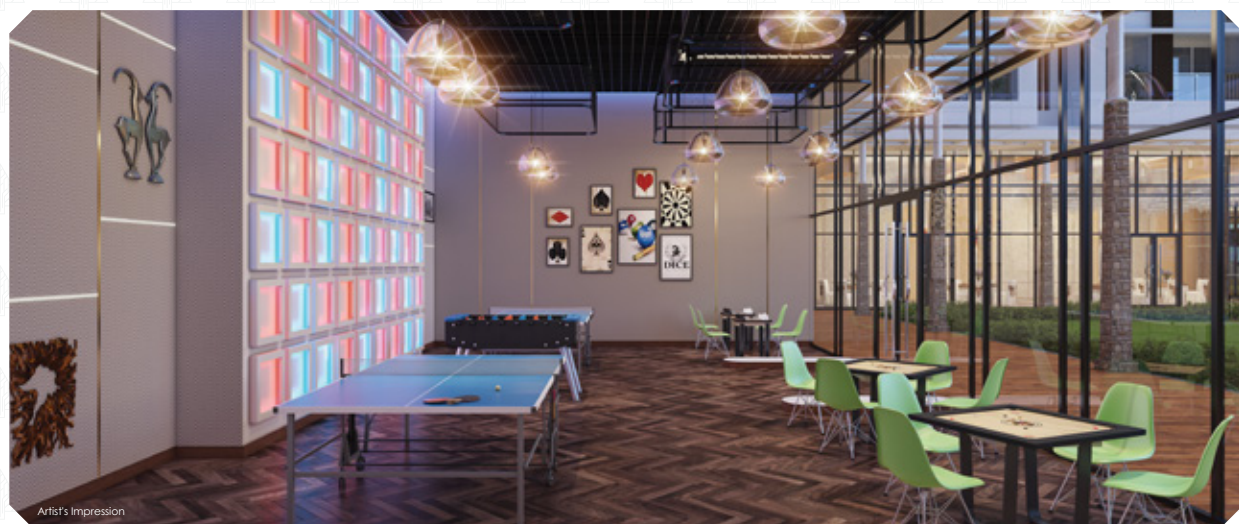


# A HOST OF AMENITIES FOR A WELL-LIVED LIFE



## SWIMMING POOL THEATRE

PLAN A POOL PARTY WITH YOUR FRIENDS AND FAMILY AND BE TREATED TO A PEACEFUL SWIM AT THIS LEISURE POOL.



## THE INDOOR GAMES ROOM

THE INTRICATELY CRAFTED CLUBHOUSE OF A MYRIAD OF INDOOR SPORTS FACILITIES TO RELAX, REJUVENATE AND UNWIND. WITH A CHOICE OF SPORTING ACTIVITIES YOU CAN HONE YOUR SKILLS AT ANY SPORT OF YOUR CHOICE OR MASTER THEM ALL.

## THE GYMNASIUM

A GYM WITH FACILITIES SO AMAZING THAT IT MAKES YOU LOOK FORWARD TO WORKING OUT.



## THE SILVER SCREEN - MINI THEATRE

ENJOY A LARGER-THAN-LIFE ENTERTAINMENT EXPERIENCE AT A THIS STATE-OF-THE-ART MINI THEATRE



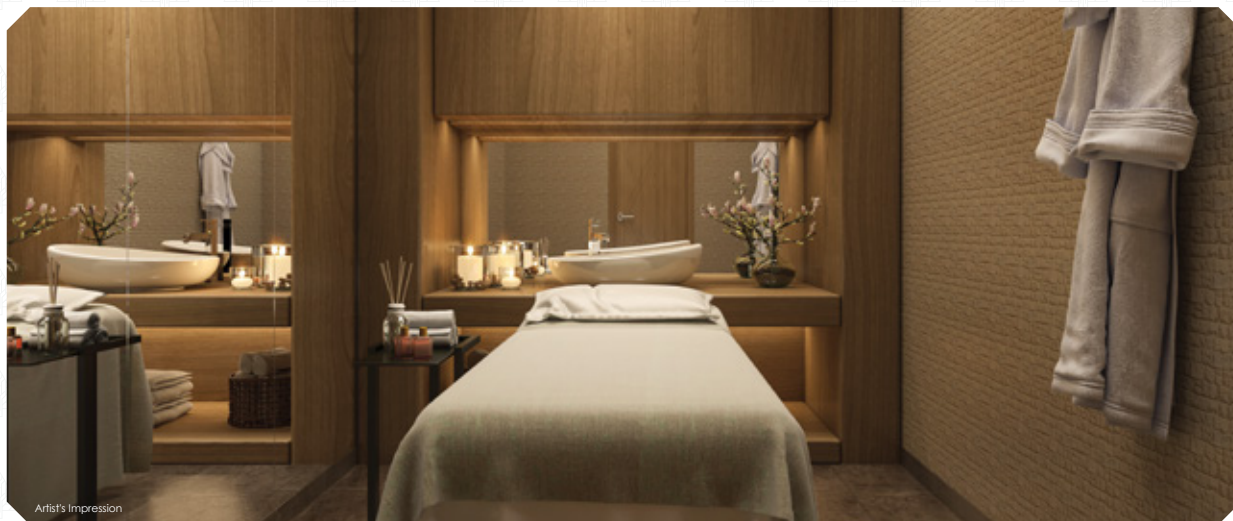


## A HOST OF AMENITIES FOR A WELL-LIVED LIFE



### ROYAL BANQUET HALL

A MAJESTIC HALL WORTHY OF GRAND AND THE MOST JUBILANT OF CELEBRATIONS.



### THE SPA

RELAX AND REVITALIZE YOUR MIND, BODY AND SPIRIT, AT THIS CENTRE OF PEACE REJUVENATION.

### HIGH-STREET SHOPPING ARENA

THIS UPSCALE SHOPPING PAVILION FEATURES A LINE UP OF HIGH-CLASS RETAIL OUTLETS OFFERING THE LATEST AND THE BEST IN LUXURY AND LIFESTYLE.



### THE TREE-HOUSE OF WONDER

A QUAIN TITTLE TREE-HOUSE, WHERE KIDS CAN HAVE THEIR OWN FUN-FILLED ADVENTURE WITH THEIR FRIENDS.







### 51+ STATE OF THE ART EXTERNAL AMENITIES

Experience the luxury of world-class amenities at **PASSCODE PRIMEPARK**. Step out into a world of relaxation, recreation and entertainment for you to enjoy with your loved ones.

#### GROUND LEVEL

- Royal Gateway
- Drop Off Zone With Decorative Plants
- Grand Entrance Lobby
- Skating Rink
- Play Court - Tennis
- Play Court - Cricket
- Play Court - Basket Ball
- Pet Paradise
- High Street Shopping Arena

#### PODIUM LEVEL

- Soul Park & Football Ground
- Stroller Park
- Yoga Grassland
- Dive in Cinema Screen
- Poolside Caribbean Cabana
- Adult Swimming Pool
- Upper Deck
- Kiddie Pool
- Joggers Track
- Golden Zone - For Senior Citizens
- Amphitheatre
- Reflexology Walkway
- Kids Play Zone

- Rock Climbing Wall
- A Walk to Remember
- Sand Pit Area
- Toddler's Play Area
- Tree House
- Outdoor Sitout Lawn
- Sculpture Court
- The Bird Lover's Zone
- Amazonian Rainforest
- Rejuvenation Walkway
- Hammock Haven
- Fragrance Park
- Outdoor Library

#### CLUB HOUSE

- Royal Banquet Hall
- Guest Suites
- Business Chamber
- Mini Theatre
- Gymnasium
- Male & Female Spa
- Game Room - Pool Table
- Game Room -Foosball
- Game Room -Table Tennis
- Game Room - Poker Table
- Game Room - Carrom
- Game Room- Chess
- Indoor Jacuzzi Area
- Toddler's Room





## INTERNAL AMENITIES

- Double-height grand entrance lobby
- Premium Vitrified tiles flooring in entire apartment
- Acrylic paint for exterior walls & plastic paint for internal walls
- Granite window frames
- Durable, easy to clean granite platform with S.S. Sink in kitchen for a natural rustic look
- Elegant sanitary fitting
- Intercom & Fire protection system
- High Speed passenger elevators of reputed brand
- Ample Car Parking spaces
- Branded electrical fittings
- Earthquake resistant structure
- Concealed copper wiring
- DG - power back up for common area lighting and emergency elevators





## THE MAESTROS OF



### MAN INFRACONSTRUCTION LIMITED

Construction | Expertise & Execution

With a legacy of over **50 years** in delivering successful projects to esteemed clients, Man Infraconstruction Limited brings with it promises of **trust, quality and transparency**. It has successfully executed construction work for some of the most significant port projects in the country, including the **Jawaharlal Nehru Port Trust, Mundra Port, Chennai Port, Vallarpadam Port and the Pipavav Port**. It has also completed several commercial, institutional and industrial projects, besides having constructed 3 high rise Residential Towers of 55 storeys, which are **tallest towers in the western suburbs of Mumbai**.



## Architect Hafeez Contractor

### HAFEEZ CONTRACTOR

Design Architect

The conceptualization and creation of Aaradhya HighPark was carried out by Hafeez Contractor. This Indian architectural design consultancy firm was presented with the prestigious **Padma Bhushan Award in 2016** and is **internationally renowned for its unique design concepts** and bold executions, backed by an unshakeable adherence to the **highest standards of quality**.



### GREEN SPACE ALLIANCE

Landscape Architecture

An award winning international consultancy firm with offices in **USA, CANADA & INDIA**. Their Global Leaders have extensive proven experience in the global markets & have successfully completed wide range of projects around the globe with experience of working with both private & public sector clients. **15 years of experience, 10+ countries, 200+ global projects**







**Corporate Address:** 12<sup>th</sup> Floor, Krushal Commercial Complex, G M Road, Chembur (W), Mumbai - 400089  
**Site Address:** PASSCODE PRIMEPARK, Aaradhya Highpark On Western Express Highway, Near Dahisar Check Naka, Mira Road, Maharashtra - 401107

**Contact:** +91 93220 93220 | **Website:** [www.primepark.in](http://www.primepark.in) | **E-mail ID:** [sales@miclgroup.in](mailto:sales@miclgroup.in)

Passcode PrimePark; being development of Wing E (ELM) and Wing F (FIR) is part of "Aaradhya HighPark"; which has been registered by Man Vastucon LLP ("the Promoter") via MahaRERA registration no. P51700030611. The Existing Development i.e. Wings A, B, C and D has been registered by the Promoter via MahaRERA registration nos. P51700017865 and P51700018244. The details of the said Project(s) are available on the website of MahaRERA at <https://maharera.mahaonline.gov.in> under registered projects. The said Project(s) is/are mortgaged in favour of ICICI Bank Limited and ECL Finance Limited (collectively "the Lenders"). No Objection Certificate (NOC)/ permission from the concerned Lender(s) will be obtained and provided for sale of flats/ units in the Project, if required.